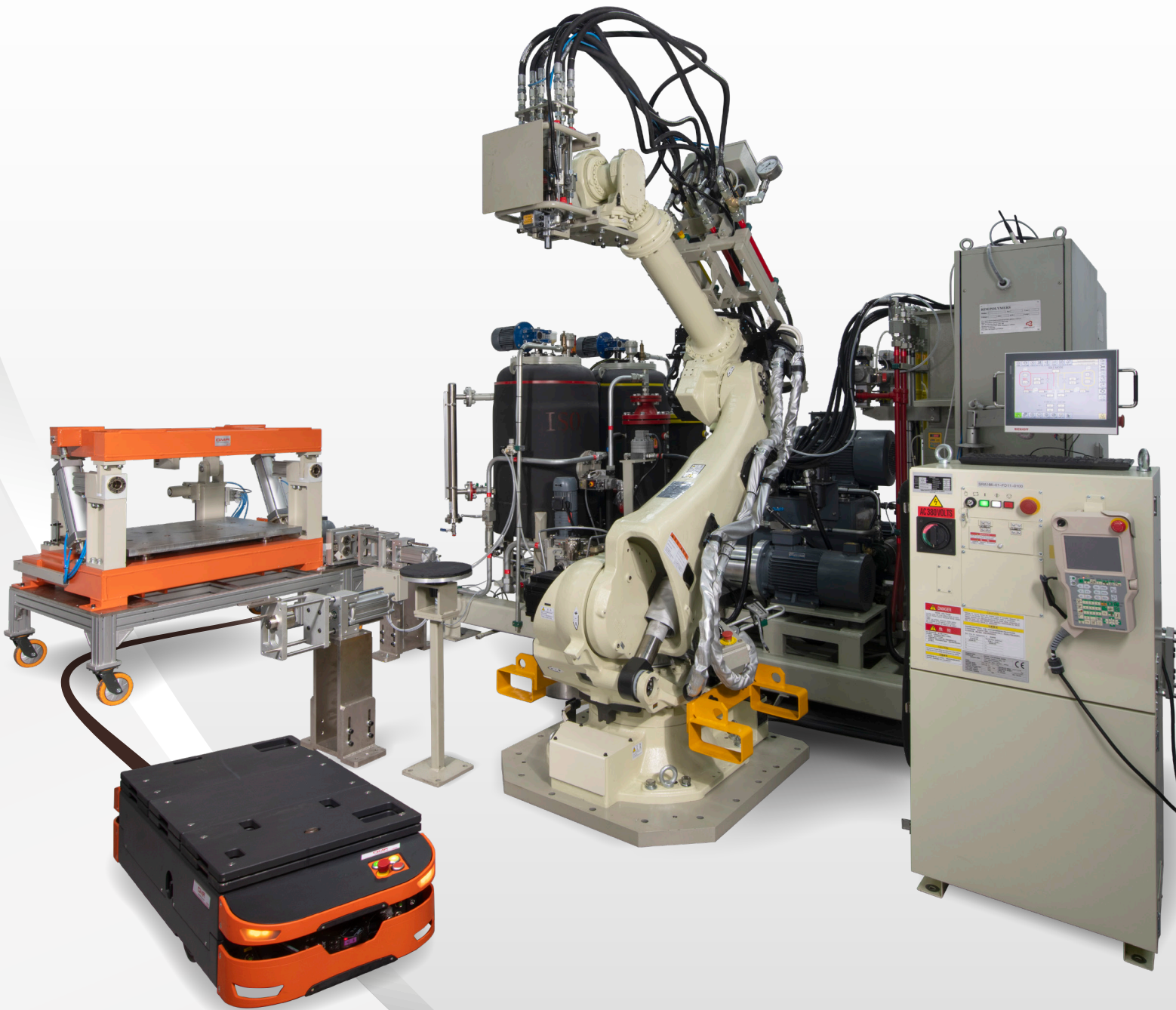


ENGINEERED TO HELP YOU WIN



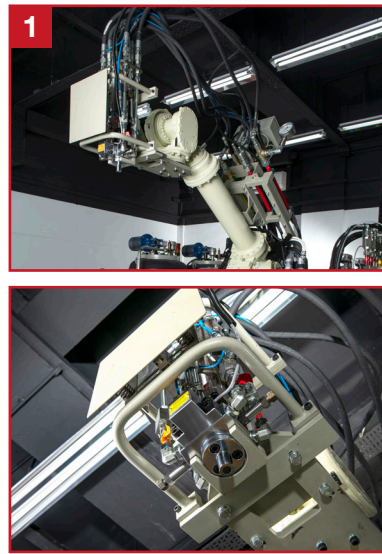
CERT NO.: 2004-1-0737  
ISO 9001: 2015

Innovation Centre

**GMA**®  
Polyurethane Processing Machinery

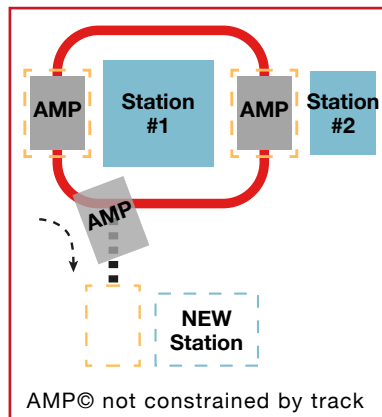
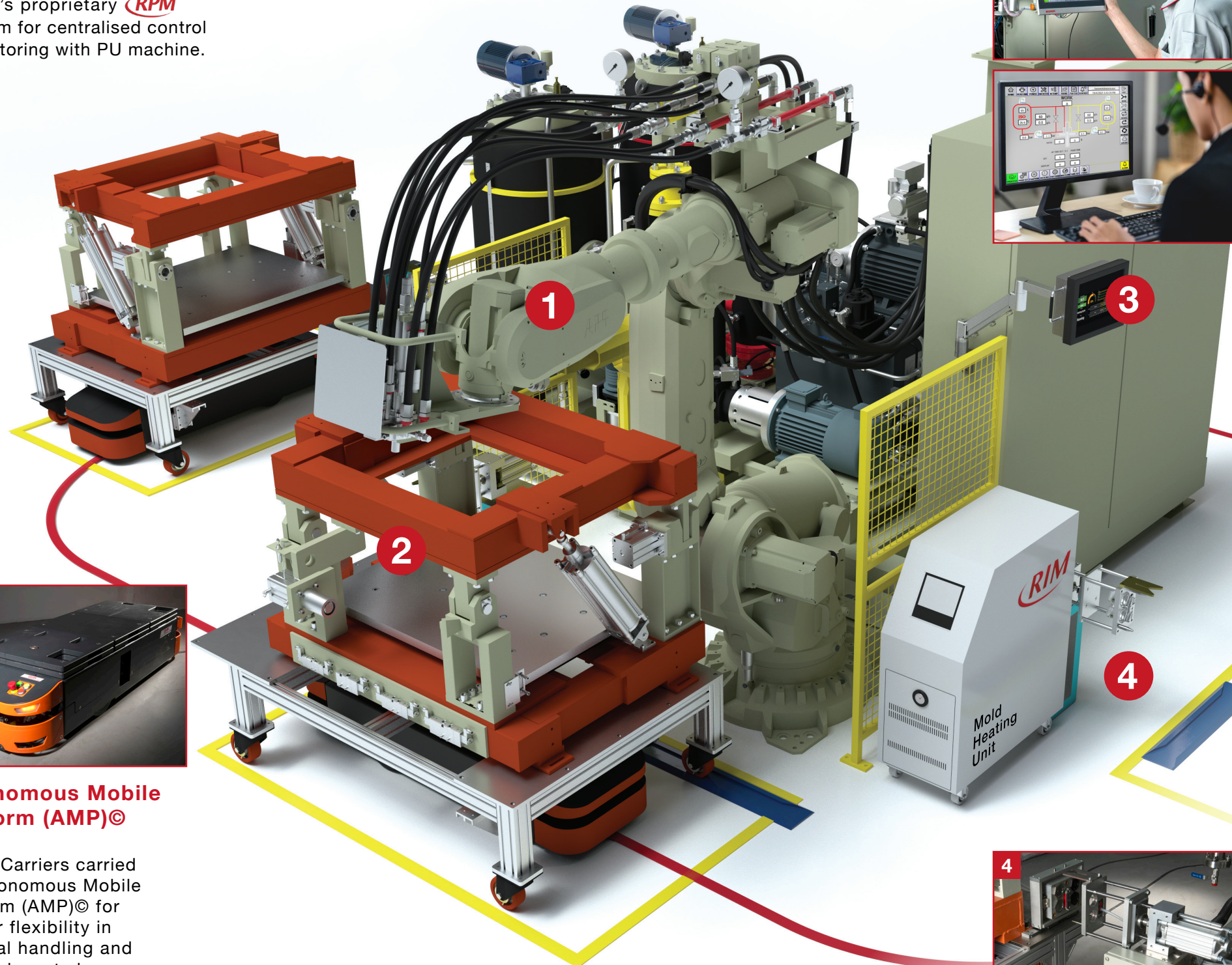


# INNOVATION CENTRE



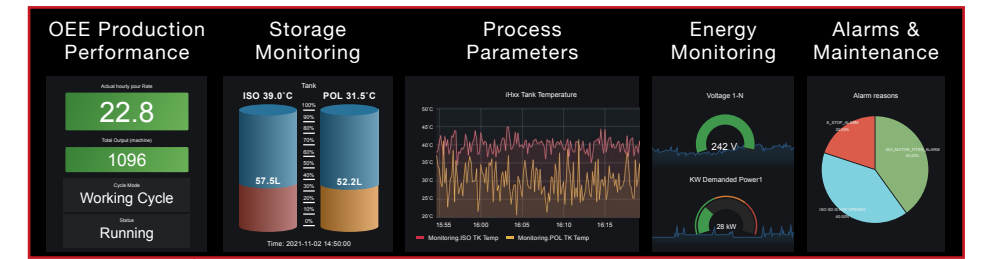
## Robotic arms to replace manual operations

RIM's mix heads mounted on robotic arms for precise & consistent PU dispensing. Robotic arms can be integrated to RIM's proprietary **RPM** platform for centralised control & monitoring with PU machine.



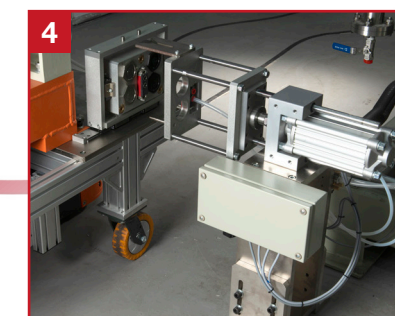
## Autonomous Mobile Platform (AMP)©

Mould Carriers carried by Autonomous Mobile Platform (AMP)© for greater flexibility in material handling and factory layout changes during future expansion.



## i-H40 Smart PU Machine with Production Process Monitoring & Remote Assistance

- Equipped with Industrial 4.0 (I4.0) & Industrial Internet-of-Things (IIoT) technologies to improve your Overall Equipment Efficiency (OEE) and help you win in today's digital age
- Remote Assistance™ to contact **RIM** Service Engineers for rapid diagnostics & troubleshooting, reducing your downtime and maintenance costs



## Quick Connections for heat & electricity for continuous operation

Portable pneumatic-powered quick connections to provide heated water & electricity wherever required. This allows AMPs to run continuously for 24/7 operation.



## CONNECTED AND POISED TO RESPOND GLOBALLY

Our network of 22 offices span across North and South Asia, the Middle East and the Americas and we're still growing our presence significantly in Mexico and North America. We have call response centres that cover the major time zones.

We're on-call 24/7 and enabled to respond on-site appropriately and effectively. It's what has earned us the trust of our many customers to become their global partner.

### INDIA

- Ahmedabad
- Bangalore
- **Chennai**
- Mumbai
- New Delhi
- **Pune**

### THAILAND

- **Bangkok**
- Chonburi
- Lamphun

### MALAYSIA

- Ipoh
- Johor Bahru
- **Kuala Lumpur**
- Malacca
- Penang

### AUSTRALIA (MELBOURNE)

### RUSSIA (MOSCOW)

### UNITED STATES OF AMERICA (SEATTLE)

### BRAZIL (SAO PAULO)

### MEXICO

### JAPAN

### CHINA

- Beijing** •
- Chengdu •
- Dalian •
- Kunshan •
- Nanjing •
- Ningbo •
- Shanghai** •
- Shenyang** •
- Shenzhen •
- Tianjin** •
- Wuxi •
- Xiamen •
- Xian** •
- Yantai •
- Hongkong •

### INDONESIA

- Bandung •
- Jakarta** •
- Surabaya •

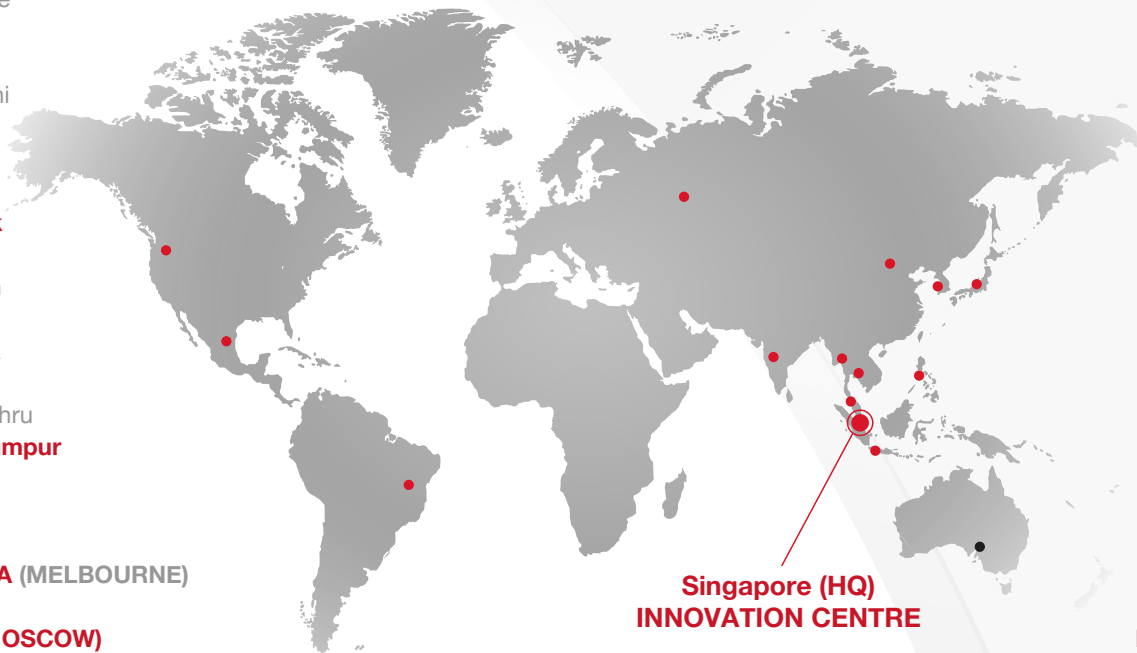
### PHILIPPINES

- Manila •
- Cebu •

### SINGAPORE (HQ)

### SOUTH KOREA (SEOUL)

### VIETNAM (HO CHI MINH)



Singapore (HQ)  
INNOVATION CENTRE

• CEH GROUP OFFICES

• RIM POLYMERS DIVISION OFFICES



### RIM POLYMERS INDUSTRIES PTE LTD

209 Henderson Road #03-08  
Henderson Industrial Park  
Singapore 159551  
Tel: (65) 6278 3288 | Fax: (65) 6271 0426  
Email: rim\_polymers@cehgroup.com  
Website: www.rimpolymers.com

PRODUCT BRAND



A MEMBER OF

